

START with all the meeting services and amenities you'd expect from a large chain hotel.

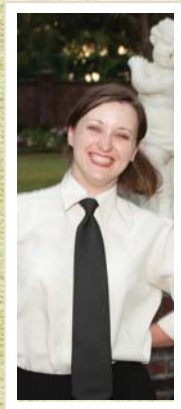
NOW picture the serenity and charm of a grand antebellum home, framed by majestic oaks that tell tall tales of courage from two and three centuries ago.

THEN imagine service that's personal, and attention to the smallest details, by a team who wrote the book on Southern hospitality.

TOP that off with savory cuisine, the finest and the freshest Louisiana has to offer.

info@www.nottoway.com

"Now what's so stressful about event planning?"



Nottoway
PLANTATION • RESORT

MEETINGS & EVENTS at Nottoway Plantation Resort

A quick email or a single telephone call to our Group Sales department can be the beginning of your most memorable meeting, retreat or club gathering - ever!

Nottoway offers:

- Overnight rooms, cottages and executive suites
- 8 individual meeting, banquet and breakout spaces
- 3 elegant ballrooms including the mansion's Grand White Ballroom
- Customized events packages for groups of all types and sizes
- Full service restaurant and lounge, for casual and fine dining
- Full-time banquet and catering staff
- State of the art AV equipment and services

Transportation:

Shuttle service and private or group transportation to and from airports, other hotels and outside activities

Also available to our guests:

Cooking classes or wine tasting with Chef, salon and massage services
Excursions to include golfing, swamp tours, plantation tours, riverboat tours, tours of historical Baton Rouge and New Orleans

Nottoway is located in the center of South Louisiana's 3 major metropolitan cities:



- Baton Rouge 25 miles
- Lafayette 75 miles
- New Orleans 70 miles
- Shreveport 283 miles
- Monroe 211 miles
- Alexandria 150 miles
- Lake Charles 146 miles
- Hammond 68 miles

With a large percentage of business and industry concentrated along the Interstate 10-12 corridor, Nottoway is the venue of choice for meetings and events, plus a unique and affordable overnight alternative for regular or occasional business travel.



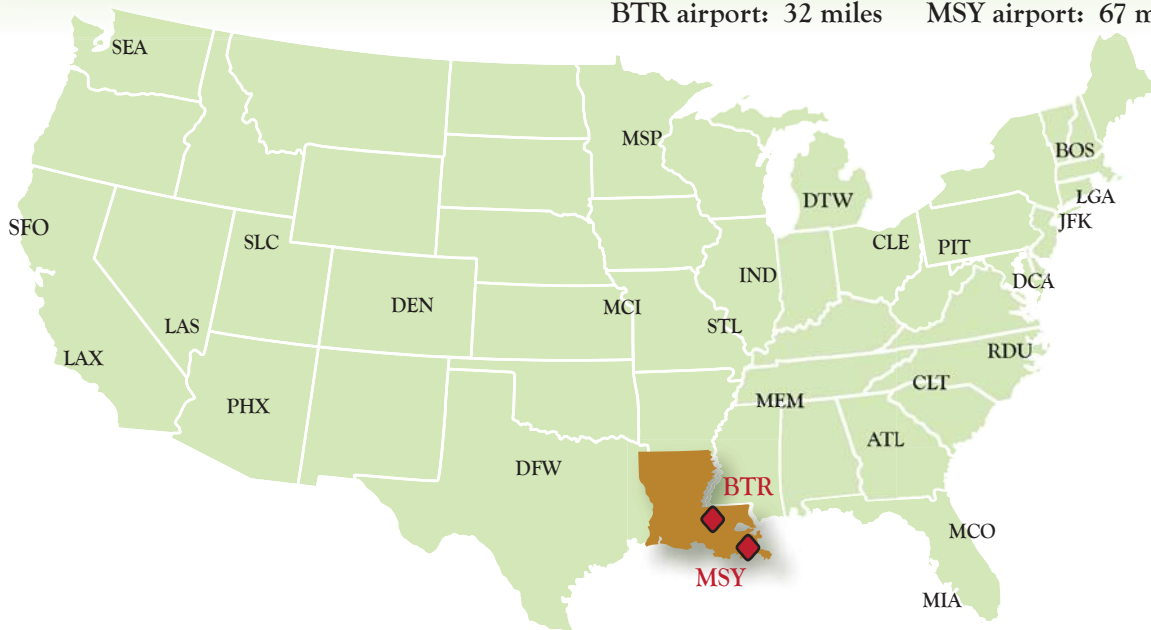
Local interstates also provide easy access to Nottoway for the drive-in markets:

- Houston, TX 288 miles
- Little Rock, AR 386 miles
- Jackson, MS 198 miles
- Birmingham, AL 424 miles
- Montgomery, AL 390 miles
- Mobile, AL 225 miles

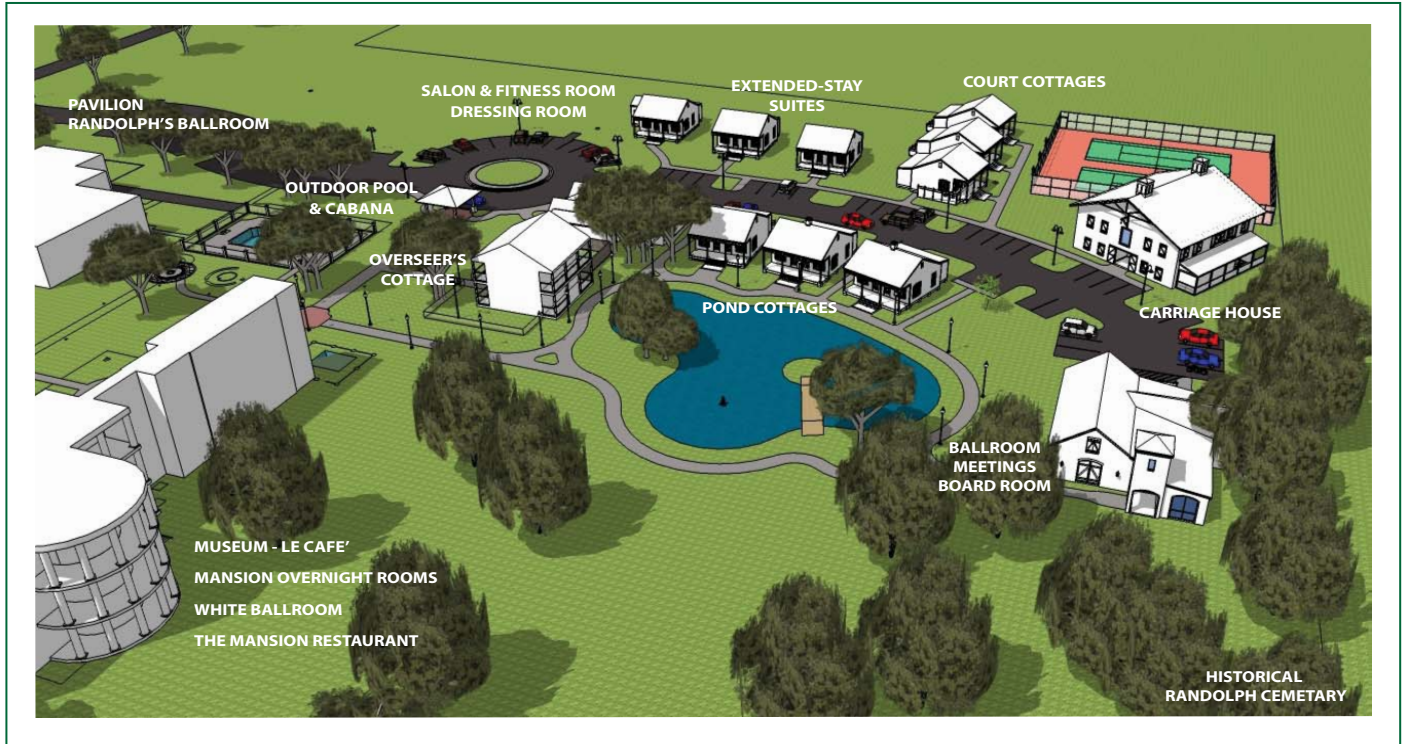


Your Nottoway Meeting Coordinator will arrange group and individual transportation to and from Baton Rouge and New Orleans airports.

BTR airport: 32 miles MSY airport: 67 miles



PROPERTY OVERVIEW - Nottoway Plantation Resort



"There's nothing else like it..."



Our 151-year old plantation setting spans 22 acres and is situated on the Great Mississippi River Road in the heart of Louisiana's plantation country.

Indoors or outdoors, the possibilities are endless for group interaction areas, relaxing break-out spaces and theme parties with food, fun and entertainment. There's easy access from LA Highway 1, and ample parking.

"That perfect, unforgettable, one-of-a-kind experience It's all here at Nottoway."

MEETING & BANQUET SPACES

MEETING ROOM	SIZE	SO.FT.	THEATER	CLASSRM.	CONF.	BANO.	RCPTN.	C.HEIGHT
Randolph's Ballroom	90' x 60'	3,600	400	300	--	300	380	16'
Parlor	13' x 16'	240	24	12	12	30	30	16'
Foyer	13' x 16'	240	--	--	--	--	15	16'
Odessa's Ballroom	42' x 56'	2,252	175	125	90	110	150	11'
Pre-function	15' x 26'	390	--	--	--	--	--	11'
Salon A	26' x 28'	728	82	62	45	55	75	11'
Salon B	26' x 28'	728	82	62	45	55	75	11'
Exec. Boardroom	14' x 21'	294	--	--	12	--	--	11'
Oscar's Dining	12' x 14'	168	--	12	20	24	20	8'
Pool & Cabana	24' x 42'	1,008	--	--	--	58	100	--
Grande Pavilion	60' x 60'	3,600	400	300	--	300	380	25'



CORPORATE ACCOMMODATIONS

Room Volume Rates & Amenities

Nottoway Plantation Resort provides a welcome break from average chain hotels, and we offer special pricing to companies whose employees and clients travel to and from our area on a regular basis. Contract rates are based on estimated number of room nights per year and are quoted individually.

Our low corporate room rates include:

- Deluxe accommodations
- A welcome beverage of your choice
- Full breakfast, choice of menu
- Free wireless internet
- Complimentary Mansion tour
- Complimentary gym facilities
- Tennis court free for 1 hour
- Library and game room

CORPORATE RETREATS & MEETING PACKAGES

Nottoway's Meeting Coordinators can arrange transportation, plan activities between meetings, cater all types of meals, and provide meeting set-up and break-down. We also offer unique dining and entertainment for themed events, and can coordinate every step from concept to complete execution.

- **PER PERSON Pricing** - includes meeting space rental & set-up, breakfast, morning break, served lunch, afternoon break, and all set-up for your specific AV needs.
- **TOTAL PACKAGE Pricing** - includes overnight rate & meeting services, per person

EXECUTIVE BOARDROOM -

Per person: \$69 - minimum 10 persons (meeting room rental only - \$300)
Total Package with Overnight: \$178 single occupancy, \$129 double occupancy

OTHER MEETING SPACES -

Per person: \$49 - minimum 25 persons (meeting room rental only - \$450)
Total Package with Overnight: \$158 single occupancy, \$109 double occupancy

SUMMARY OF ROOM TYPES

MANSION & WING

BED & BREAKFAST ROOMS

- 4 - 1 Double bed
- 2 - 1 Queen size bed
- 1 - 1 King size bed

OTHERS

- 16 - 2 Queen size beds
- 14 - 1 King size bed (7 with sofa beds)
- 2 - 1 King size bed and 1 Twin bed
- 1 - 1 Double bed and 1 Twin bed
- 1 - 1 Queen bed and 2 Twin beds